

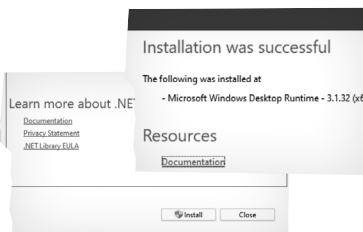
**Note:** It's highly recommended/required you install the following update from Microsoft here before running the updater:

[Download x64 to run desktop apps: https://dotnet.microsoft.com/en-us/download/dotnet/3.1/runtime?cid=getdotnetcore&os=windows&arch=x64](https://dotnet.microsoft.com/en-us/download/dotnet/3.1/runtime?cid=getdotnetcore&os=windows&arch=x64)

A lot of users will already have this installed however you might not especially if it's a new copy of Windows.



**1** You will see these windows when you complete this update.



**2** Download the Update Installer - Unzip the folder to your desktop:

[https://blaze-evercade.com/Firmware/Pocket\\_FirmwareUpdater\\_1.1.0-win\\_x64.exe.zip](https://blaze-evercade.com/Firmware/Pocket_FirmwareUpdater_1.1.0-win_x64.exe.zip)

**3** Open the folder and run "Super\_Pocket\_Update\_Firmware\_1.1.0-win.exe".

**4** This window might pop up, click "more info" and click "Run anyway".



**5** Select what device you want to update.

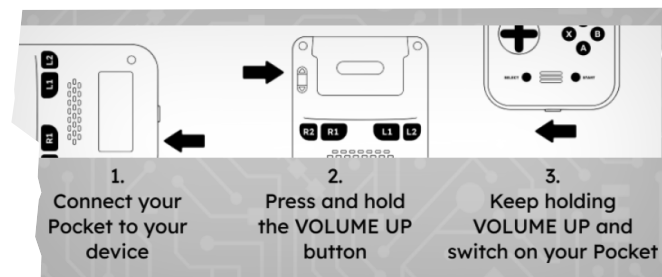


**6** You likely need to install or reinstall the driver. Press the "(RE)INSTALL DRIVERS" button, allow "DriverInstaller.exe" to run.

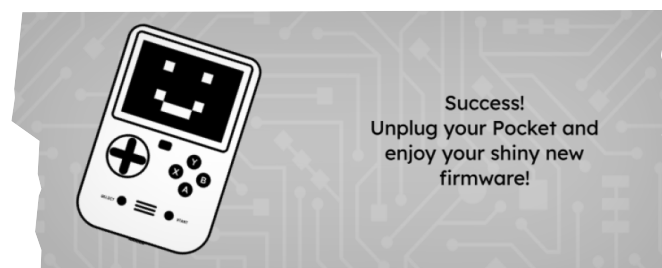


**7** You will then see the image below.

**Note:** When following the instructions and the BLAZE ENTERTAINMENT logo displays whilst connected to the device and you are holding Vol Up. Turn off the Super Pocket and turn it back on whilst still holding Vol up. (It might take a few tries so don't worry!).



**8** Once the updater is finished, your Super Pocket should automatically restart!



**9** You can now close the program, unplug your Super Pocket and enjoy!

### WINDOWS MINIMUM SYSTEM REQUIREMENTS

Windows 10, 11 (We recommend you install the following file before carrying out the update.

<https://dotnet.microsoft.com/en-us/download/dotnet/3.1/runtime?cid=getdotnetcore&os=windows&arch=x64>

- 64Bit x86 Processor (32Bit x86 not supported)
- 256mb disk space
- 1GB DRAM